

**INSTRUMENT KEY**

- ETC S4 Leko 26° @575w
- ETC S4 Leko 36° @575w
- ETC S4 Leko 50° @575w
- ETC S4 PARnel @575w
- Altman 6" Fresnel @750w
- Mole-Richardson 8" Fresnel @2kw
- ETC ColorSource Par @90w
- L&E 4-Circuit Ministrip @750w EYC Lamp
- L&E 3-Circuit Ministrip @750w EYC Lamp

**ACCESSORIES**

- 7.5" Barndoor

**LABEL LEGEND**

Color  
U #  
Purpose

**NOTES**

Notes here

**REVISIONS**

| Rev | Description        | Date    | By  |
|-----|--------------------|---------|-----|
| C   | Minor adjustments  | 2/5/19  | KCZ |
| B   | Cuts and twofering | 1/30/19 | KCZ |
| A   | Prelim drafting    | 1/26/19 | KCZ |

This drawing represents visual concepts and construction suggestions only. It does not replace the knowledge and advice of a licensed structural engineer. The designer is unqualified to determine the structural appropriateness of this design and will not assume responsibility for improper engineering or use.

**LIGHTING DESIGNER:** Kat C. Zhou  
zhou.kat@gmail.com

**ASST. LIGHTING DESIGNER:** Danielle Elegy  
delegy@bu.edu

**MASTER ELECTRICIAN:** Devin Sullivan

**OUR COUNTRY'S GOOD**

DIRECTED BY . . . . . JUDY BRAHA  
SCENIC BY . . . . . MARINA SARTORI  
LIGHTING BY . . . . . KAT C. ZHOU  
COSTUMES BY . . . . . ZANE KEALEY  
SOUND BY . . . . . FEITONG WANG



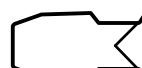

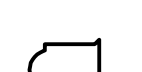
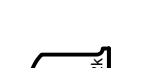

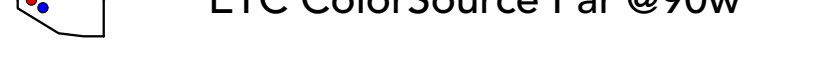
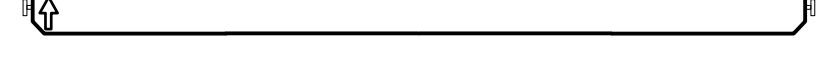
**KAT C. ZHOU**  
LIGHTING DESIGN

**OVERHEAD**

SCALE: 1/2" = 1'-0"  
DATE: 1/16/19  
REVISED: 5/17/20  
DRAWN BY: KCZ

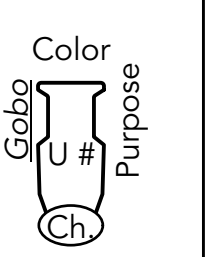
PLATE  
**1**  
OF 3

**INSTRUMENT KEY**

-  ETC S4 Leko 26° @575w
-  ETC S4 Leko 36° @575w
-  ETC S4 Leko 50° @575w
-  ETC S4 PARnel @575w
-  Altman 6" Fresnel @750w
-  Mole-Richardson 8" Fresnel @2kw
-  ETC ColorSource Par @90w
-  L&E 4-Circuit Ministrip @750w EYC Lamp
-  L&E 3-Circuit Ministrip @750w EYC Lamp

**ACCESSORIES**

**LABEL LEGEND**



**NOTES**

Please discuss LED tape practicals with designer. See column elevation detail for more information on placement.

Platform LED to be wireless powered and controlled.

Exact placement of booms and floor mounts TBD on site. Trim of trombones also to be set on site.

**REVISIONS**

| NO. | DESCRIPTION            | DATE    | BY  |
|-----|------------------------|---------|-----|
| C   | Revisions as built     | 3/1/19  | KCZ |
| B   | Revision of practicals | 2/15/19 | KCZ |
| A   | Prelim drafting        | 1/26/19 | KCZ |

This drawing represents visual concepts and construction suggestions only. It does not replace the knowledge and advice of a licensed structural engineer. The designer is unqualified to determine the structural appropriateness of this design and will not assume responsibility for improper engineering or use.

LIGHTING DESIGNER: **Kat C. Zhou**  
zhou.kat@gmail.com

ASST. LIGHTING DESIGNER: **Danielle Elegy**  
delegy@bu.edu

MASTER ELECTRICIAN: **Devin Sullivan**

**OUR COUNTRY'S GOOD**

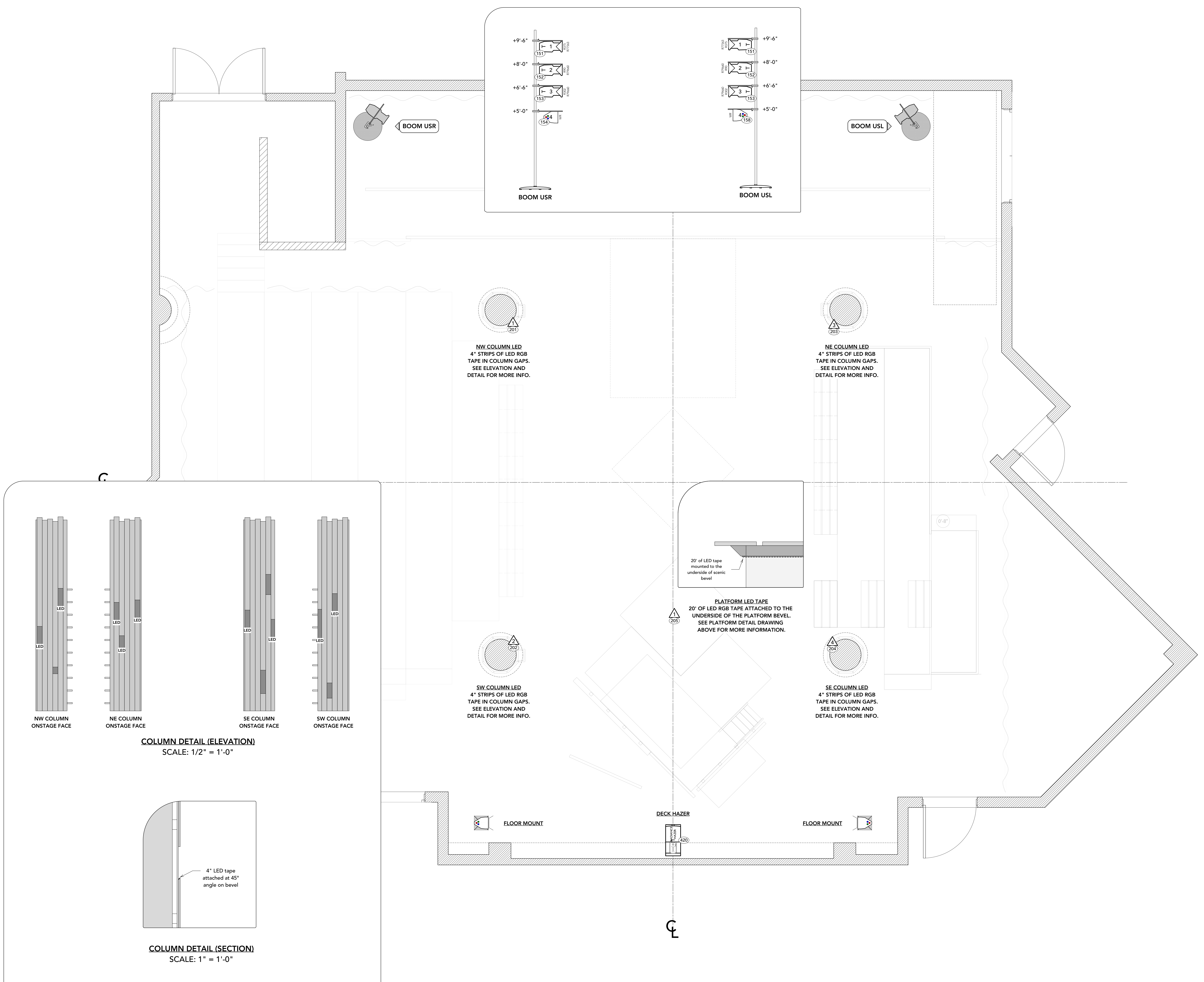
DIRECTED BY . . . . . JUDY BRAHA  
SCENIC BY . . . . . MARINA SARTORI  
LIGHTING BY . . . . . KAT C. ZHOU  
COSTUMES BY . . . . . ZANE KEALEY  
SOUND BY . . . . . FEITONG WANG

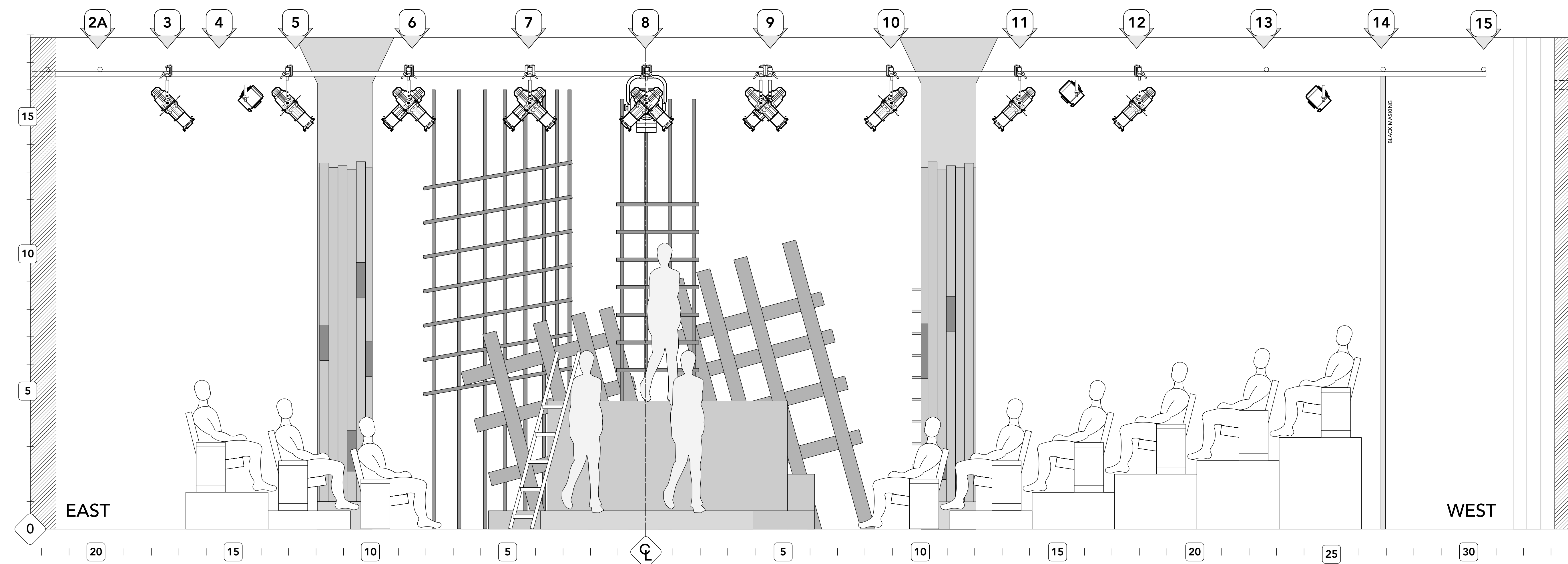


**DECK/PRACTICAL**

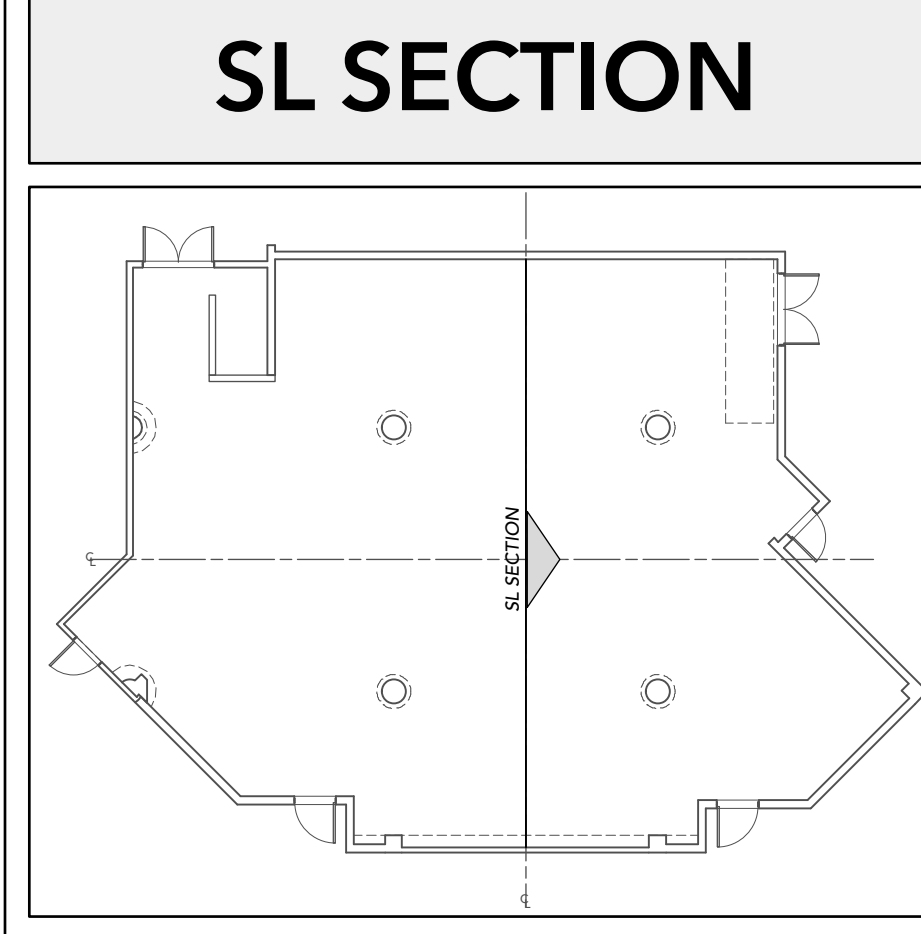
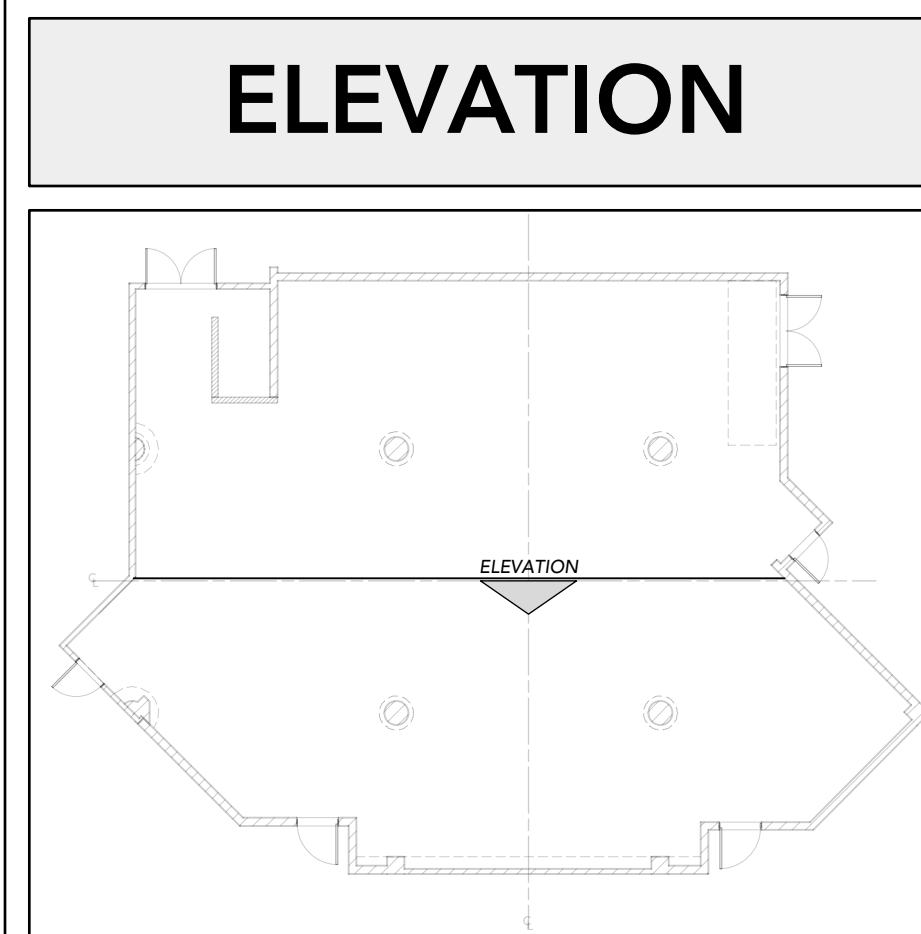
SCALE: 1/2" = 1'-0"  
DATE: 1/16/19  
REVISED: 3/1/19  
DRAWN BY: KCZ

PLATE  
**2**  
OF 3





**ELEVATION**  
SCALE: 1/2" = 1'-0"



**NOTES**

Please discuss LED tape practicals with designer. See column elevation detail on Plate 2 for more information on placement.

Platform LED to be wireless powered and controlled.

Exact placement of booms and floor mounts TBD on site. Trim of trombones also to be set on site.

**REVISIONS**

|   |                    |         |     |
|---|--------------------|---------|-----|
| D | Drawn as built     | 3/1/19  | KCZ |
| C | Minor adjustments  | 2/5/19  | KCZ |
| B | Cuts and twofering | 1/30/19 | KCZ |
| A | Prelim drafting    | 1/26/19 | KCZ |

This drawing represents visual concepts and construction suggestions only. It does not replace the knowledge and advice of a licensed structural engineer. The designer is unqualified to determine the structural appropriateness of this design and will not assume responsibility for improper engineering or use.

**LIGHTING DESIGNER:** Kat C. Zhou  
zhou.kat@gmail.com

**ASST. LIGHTING DESIGNER:** Danielle Elegy  
delegy@bu.edu

**MASTER ELECTRICIAN:** Devin Sullivan

**OUR COUNTRY'S GOOD**

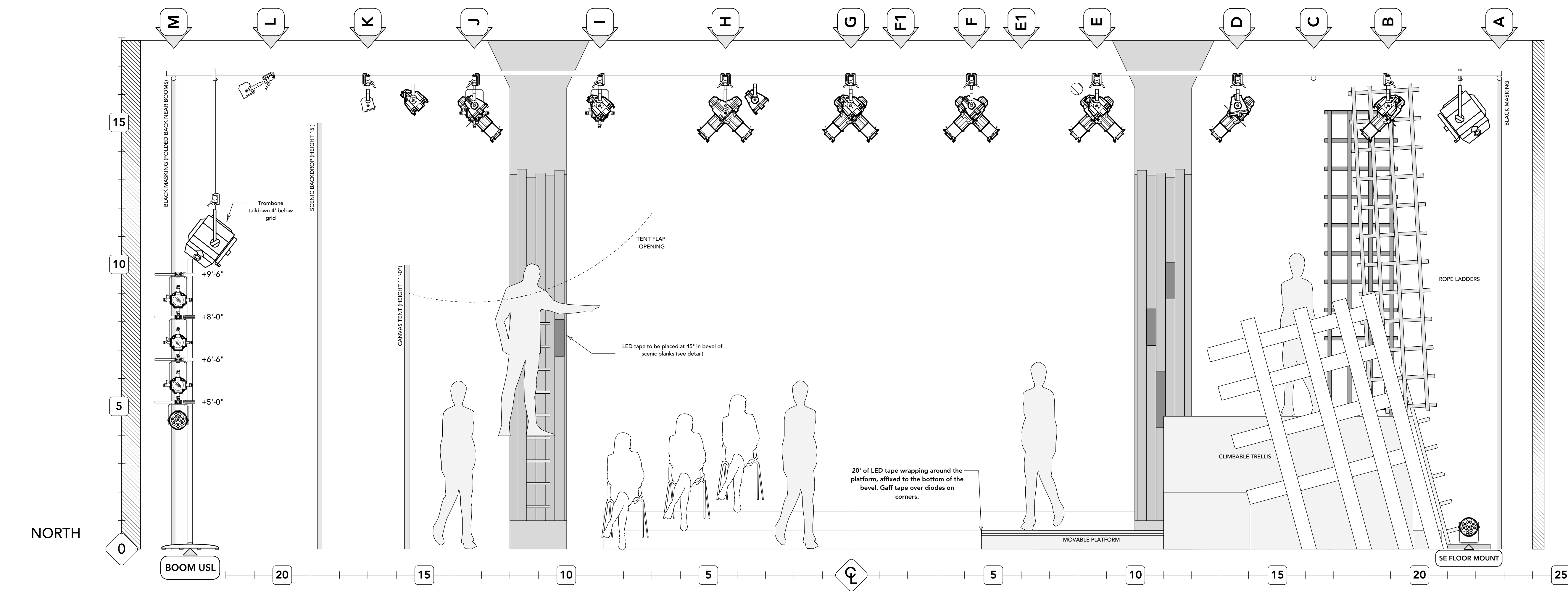
DIRECTED BY . . . . . JUDY BRAHA  
SCENIC BY . . . . . MARINA SARTORI  
LIGHTING BY . . . . . KAT C. ZHOU  
COSTUMES BY . . . . . ZANE KEALEY  
SOUND BY . . . . . FEITONG WANG



**ELEV/SECTION**

SCALE: 1/2" = 1'-0"  
DATE: 1/16/19  
REVISED: 5/17/20  
DRAWN BY: KCZ

PLATE  
**3**  
OF 3



**SL SECTION**  
SCALE: 1/2" = 1'-0"